

Mr. Smiles ;-)

Yes, my browsers are set up with Creation time Parameters of 0 and 1.

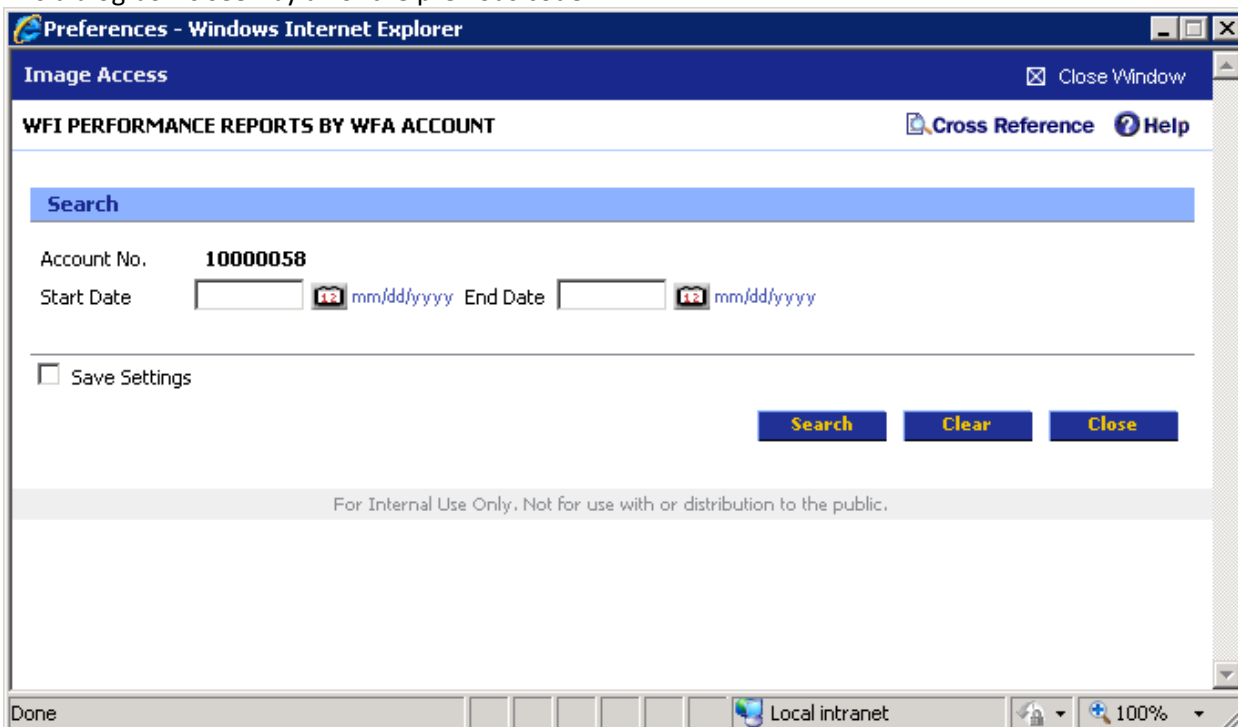
I just however noticed that sometimes the dialog box is seen as a Window, and other times the dialog box is seen as a Browser. When the dialog box is seen as a Window, none of the objects are of course found. Why?

Using the following;:

```
Window("Windows Internet Explorer_Pref").Activate
Browser("Preferences").Page("Preferences").WebElement("close_window2").Check.CheckPoint("ImageAccess_window")
If Browser("Preferences").Page("Preferences").WebElement("innertext:='&'Image Access").Exist Then
    MsgBox "Found"
Else
    MsgBox "Not Found"
End If
```

```
With Browser("Preferences").Page("Preferences")
    bFlagA1 = .WebElement("WebTable_AccountNo").Exist(1)
    bFlagA2 = .WebEdit("StartDate").Exist(0.5)
    bFlagA3 = .WebElement("mm/dd/yyyy_Start").Exist(0.5)
    bFlagA4 = .WebCheckBox("CheckboxSave1").Exist(0.5)
    ...
End With
```

This dialog box is seen by all of the previous code:

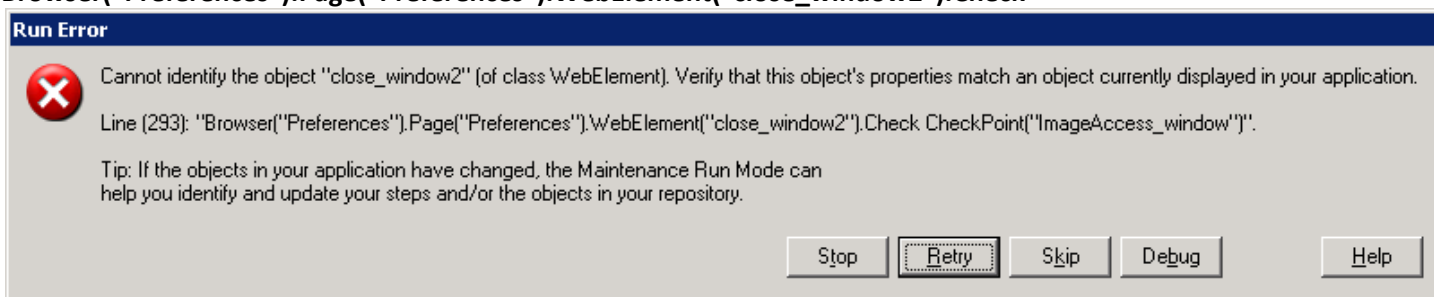


Now on this Dialog box, the Dialog box should be found plus the Account No.;

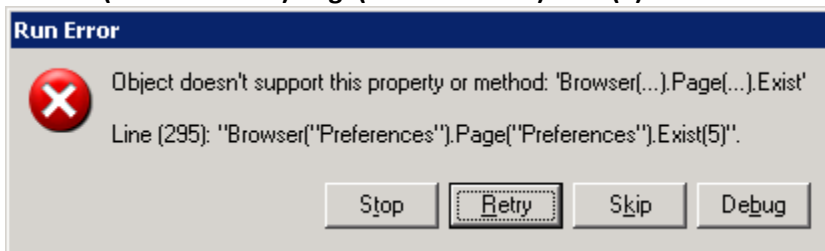


Second run for the following report. Same code but diff dialog box yields

**Window("Windows Internet Explorer\_Pref").Activate  
Browser("Preferences").Page("Preferences").WebElement("close\_window2").Check**



**Checkpoint("ImageAccess\_window")  
Browser("Preferences").Page("Preferences").Exist(5)**



**With Browser("Preferences").Page("Preferences")  
bIFlagA1 = .WebElement("WebTable\_AccountNo").Exist(1)  
bIFlagA2 = .WebEdit("StartDate").Exist(0.5)  
bIFlagA3 = .WebElement("mm/dd/yyyy\_Start").Exist(0.5)  
bIFlagA4 = .WebCheckBox("CheckboxSave1").Exist(0.5)**

...

The second Run Error tells me that none of my bIFlag... objects will be found. (and none are as all are set to False)

Selecting objects with OSpY in both dialog boxes indicates the same O/r structure (With Browser("Preferences").Page("Preferences")...).

I selected Image Access on both dialog boxes with OSpy. Exactly the same.

Is there a better way to do my code to find each of my dialog boxes.

Object Spy

Use the pointing hand button to select the object whose properties or methods you want to view.  
Tip: Hold the Ctrl key to change the window focus or perform other mouse operations.

Keep Object Spy on top while spying.

Browser : Preferences  
Page : Preferences  
WebTable : Image Access  
WebElement : close\_window2

Run-time Object Properties  Test Object Properties

Properties | Methods

| Properties | Values                       |
|------------|------------------------------|
| Class Name | WebElement                   |
| abs_x      | 507                          |
| abs_y      | 375                          |
| class      | windowtitle                  |
| height     | 26                           |
| html id    |                              |
| html tag   | TD                           |
| innerHTML  | <A onclick="javascript: wind |
| innerText  | Image Access                 |
| outerhtml  | <TD class=windowtitle heigh  |
| outertext  | Image Access                 |
| type       |                              |
| visible    | True                         |
| width      | 659                          |
| x          | 2                            |
| y          | 3                            |

Class Name

Description:

Close Help

Object Spy

Use the pointing hand button to select the object whose properties or methods you want to view.  
Tip: Hold the Ctrl key to change the window focus or perform other mouse operations.

Keep Object Spy on top while spying.

Browser : Preferences  
Page : Preferences  
WebTable : Image Access  
WebElement : close\_window2

Run-time Object Properties  Test Object Properties

Properties | Methods

| Properties | Values                       |
|------------|------------------------------|
| Class Name | WebElement                   |
| abs_x      | 507                          |
| abs_y      | 375                          |
| class      | windowtitle                  |
| height     | 26                           |
| html id    |                              |
| html tag   | TD                           |
| innerHTML  | <A onclick="javascript: wind |
| innerText  | Image Access                 |
| outerhtml  | <TD class=windowtitle heigh  |
| outertext  | Image Access                 |
| type       |                              |
| visible    | True                         |
| width      | 659                          |
| x          | 2                            |
| y          | 3                            |

Class Name

Description:

Close Help